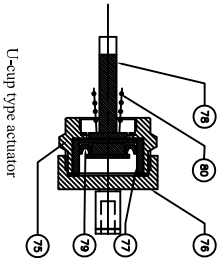
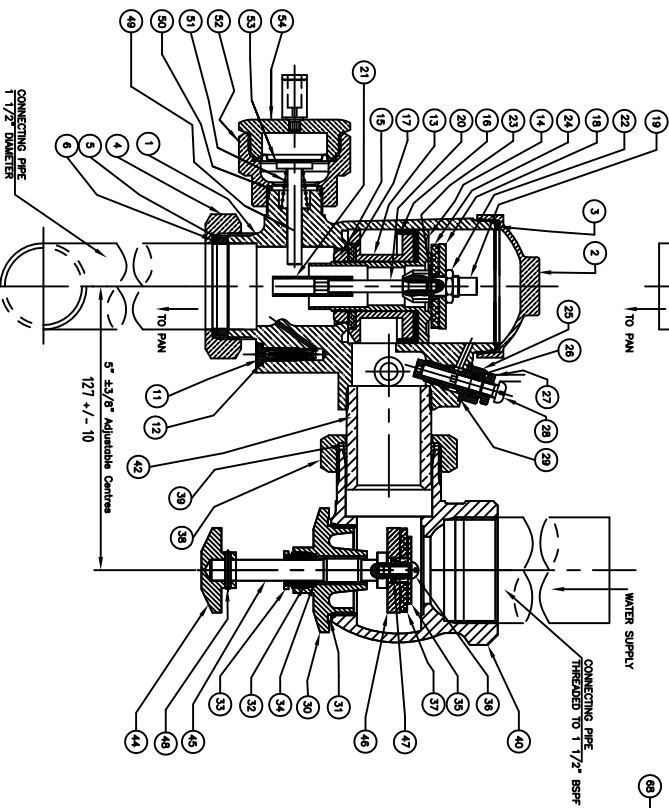
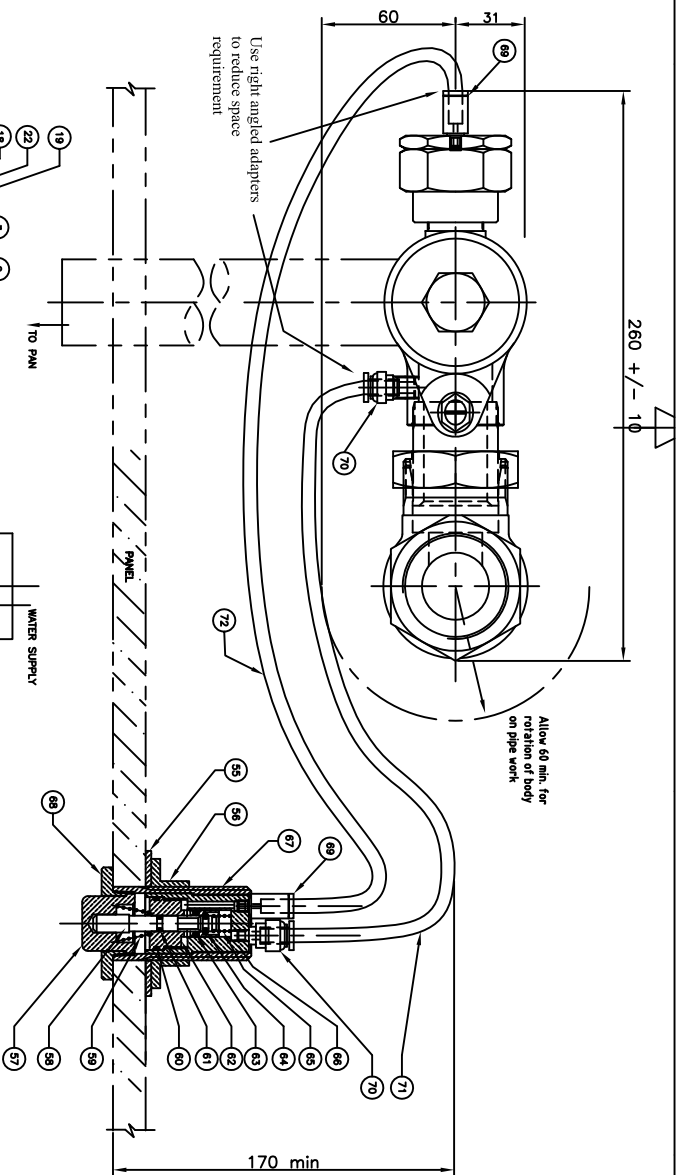


* 40mm for wall thickness greater than 150mm

For future maintenance purposes, off-flake adapter and diaphragm housing must be accessible



U-cup type actuator



Drawn by
R. NAPTHALI

Checked by

Origination_Date

Issue Date
20.09.04

Scale
NTS

Title
HYDRAULIC FLUSH VALVE B1-H

MATERIAL

PUBCO PRODUCTS AND ENGINEERING

Drawing No

250-B1-H DIM

Issue No

0

Sheet

1/2

Issue No

Revision note

Date

Issued by Approved

3A South Street, Rydalmere, NSW 2116
Ph. (02) 9684 2182, Fax: (02) 9638 2764

Item No	Qty	Part No	Description
1	1	250-01-B1H	FLUSH VALVE BODY
2	1	250-02A	FLUSH VALVE CAP - MODEL B4
3	1	250-03	FLUSH VALVE CAP WASHER
4	1	250-07A	FLUSH PIPE COUPLING NUT-MODEL B4
5	1	250-08	RUBBER WASHER FOR COUPLING NUT
6	1	250-09	COUPLING NUT WASHER
7	---	---	NOT USED-----
8	---	---	NOT USED-----
9	---	---	NOT USED-----
10	---	---	NOT USED-----
11	1	250-16A	AIR VALVE COMPLETE ASSEMBLY
12	1	250-17	FIBRE WASHER FOR AIR VALVE
13	1	250-18	MAIN VALVE BODY
14	1	250-19	MAIN VALVE STEM
15	1	250-21	MAIN VALVE BODY BRASS NUT
16	1	250-22	BUCKET WASHER
17	1	250-23	MAIN VALVE BODY RUBBER WASHER
18	1	250-24	AUXILIARY VALVE PLATE
19	1	250-25	AUXILIARY VALVE GUIDE
20	1	250-26	AUXILIARY VALVE STEM
21	1	250-27	AUXILIARY VALVE SLEEVE
22	1	250-28	AUXILIARY VALVE LOCK NUT
23	1	250-29A	AUXILIARY VALVE STAINLESS STEEL WASHER
24	1	250-30	AUXILIARY VALVE RUBBER WASHER
25	1	250-31	ADJUSTING VALVE BODY
26	1	250-32A	ADJUSTING VALVE GRAPHITE PACKING
27	1	250-32	ADJUSTING VALVE GLAND NUT
28	1	250-33	ADJUSTING VALVE SCREW
29	1	250-35	ADJUSTING VALVE WASHER
30	1	250-38A	STOP COOK CAP
31	1	250-39	STOP COOK CAP WASHER
32	1	250-41A	STOP COOK GRAPHITE PACKING
33	1	250-41	STOP COOK PACKING GLAND
34	1	250-42	STOP COOK PACKING GLAND WASHER
35	1	250-43	STOP COOK STAINLESS STEEL WASHER
36	1	250-44	SS SCREW-3/16"x3/8" LG WHITWORTH
37	1	250-45	STOP COOK VALVE RUBBER WASHER

Item No	Qty	Part No	Description
38	1	250-51	STOP COOK COUPLING NUT
39	1	250-52A/52B	COMPRESSION RING
40	1	250-96	ADJUSTABLE CENTRE STOP COOK BODY
41	---	---	NOT USED-----
42	1	250-113	ADJUSTABLE CENTRE NIPPLE
43	---	---	NOT USED-----
44	1	250-115	STOP COOK WHEEL
45	1	250-116A/116B	STOP COOK STEM
46	1	250-117	STOP COOK VALVE STEM PLATE
47	1	250-120	O RING - BS011 - NITRILE RUBBER
48	1	250-121	ROLLED SPRING PIN S/S
49	1	250-14B	OPERATING STEM - HYDRAULIC
50	1	250-130	O RING - BS019 - EPDM
51	1	250-131A 250-131B	OPERATING STEM SPRING HYDRAULIC-TAPER 60MPa + PARALLEL 30 TO 60MPa
52	1	250-132	ACTUATOR DIAPHRAGM HOUSING BODY
53	1	250-134A 250-134B	ACTUATOR DIAPHRAGM - DURO 70 EPDM ACTUATOR DIAPHRAGM - DURO 60 NITRILE
54	1	250-133	ACTUATOR DIAPHRAGM HOUSING CAP
55	1	250-128	BACK PLATE
56	1	250-129	FLANGED BACK NUT
57	1	250-135	C/P HYDRAULIC VALVE PUSH BUTTON
58	1	250-136	HYDRAULIC VALVE STEM
59	1	250-137	HYDRAULIC PUSH BUTTON SPRING S/S/316 TAPER
60	1	250-138	O RING - BS019 - EPDM
61	1	250-139	O RING - BS007 - EPDM
62	1	250-143	HYDRAULIC VALVE SEAT
63	1	250-140	O RING - METRIC 8x2 - NITRILE RUBBER
64	1	250-141	O RING - BS105 - EPDM
65	1	250-142	HYDRAULIC VALVE STEM SPRING S/S GROUND
66	1	250-144	HYDRAULIC VALVE BODY
67	1	250-145	HYDRAULIC VALVE ADAPTOR-SHORT SLEEVE
68	1	250-147	C/P WALL FLANGE HYDRAULIC - 2"

Item No	Qty	Part No	Description
69	1	250-149	AIRLINE ADAPTOR 6mm TUBE - M5
70	1	250-150	NOROREN C AIRLINE FITTING 6mm - M5
71	1	250-151	RED COLOUR 6mm TUBE POLYETHYLENE
72	1	250-152	BLACK COLOUR 6mm TUBE POLYETHYLENE
73	1	250-146	HYDRAULIC VALVE ADAPTOR-LONG SLEEVE
74	1	250-148	C/P WALL FLANGE HYDRAULIC - 3"
75	1	250-153	PISTON ACTUATOR HOUSING BODY
76	1	250-154	PISTON ACTUATOR HOUSING CAP
77	1	250-155	PISTON ACTUATOR HOUSING SLEEVE
78	1	250-156	PISTON ACTUATOR STEM
79	1	250-157	PISTON ACTUATOR STEM U-CUP
80	1	250-158	PISTON ACTUATOR STEM SPRING
81	1	250-159	PRESSURE OFFTAKE Y-PIECE ADAPTOR

Drawn by R. NAPTALI	Checked by	Origination_Date	Issue Date 29/08/09	Scale
Title DUAL FLUSH B4H PARTS LIST				
PUBCO PRODUCTS AND ENGINEERING 3A South Street, Rydalmere, NSW 2116 Ph. (02) 9684 2182, Fax. (02) 9638 2764			Drawing No 250 B4H PARTS	Issue No 0
				Sheet 2/2

Issue No	Revision note	Date	Issued by	Approved
1				