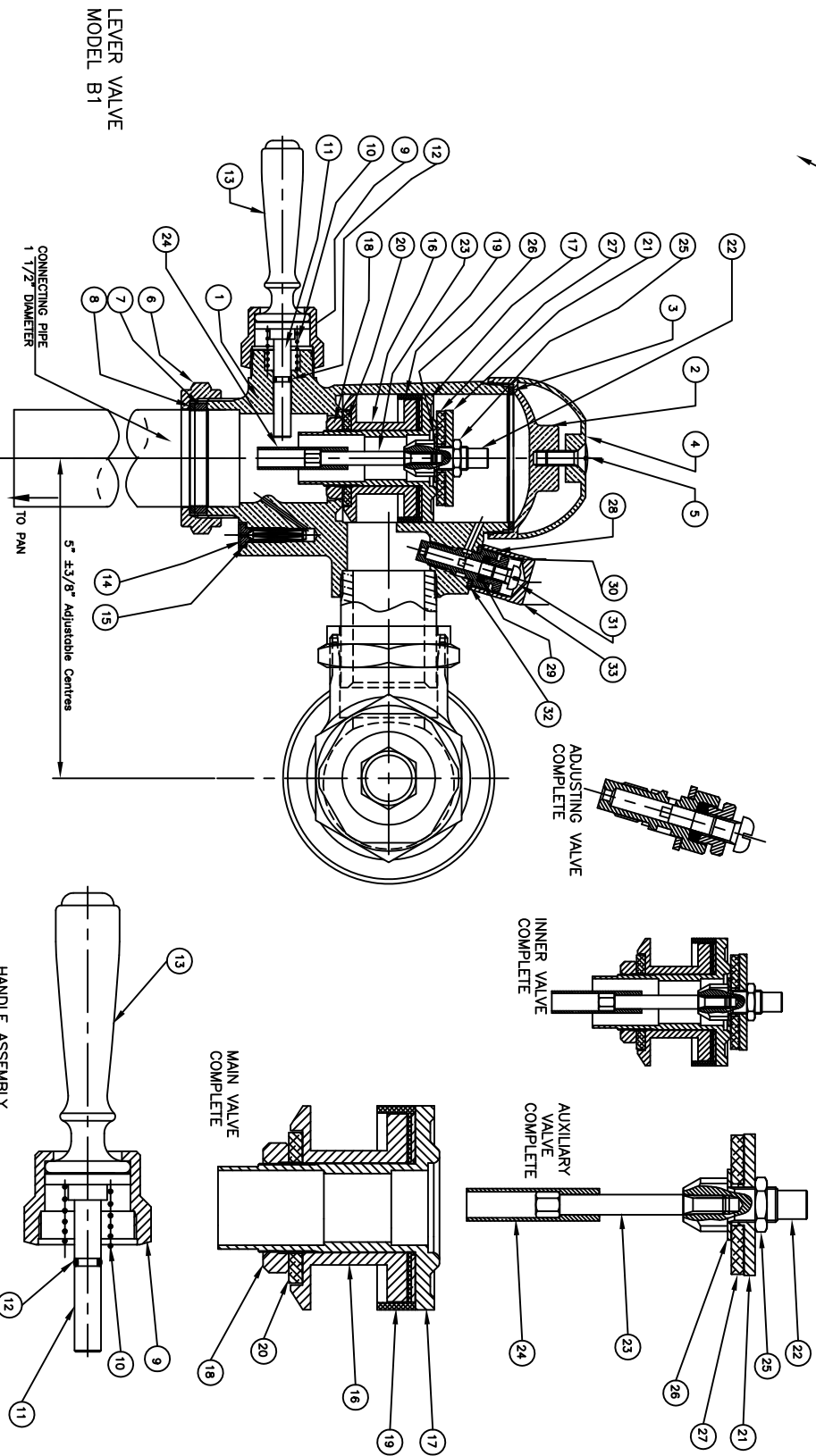


ITEM NUMBER
33
SELECT PART NO.
FROM PARTS
LISTING



LEVER VALVE
MODEL B1

CONNECTING PIPE
1 1/2" DIAMETER

5" ±3/8" Adjustable Centres

HANDLE ASSEMBLY
COMPLETE

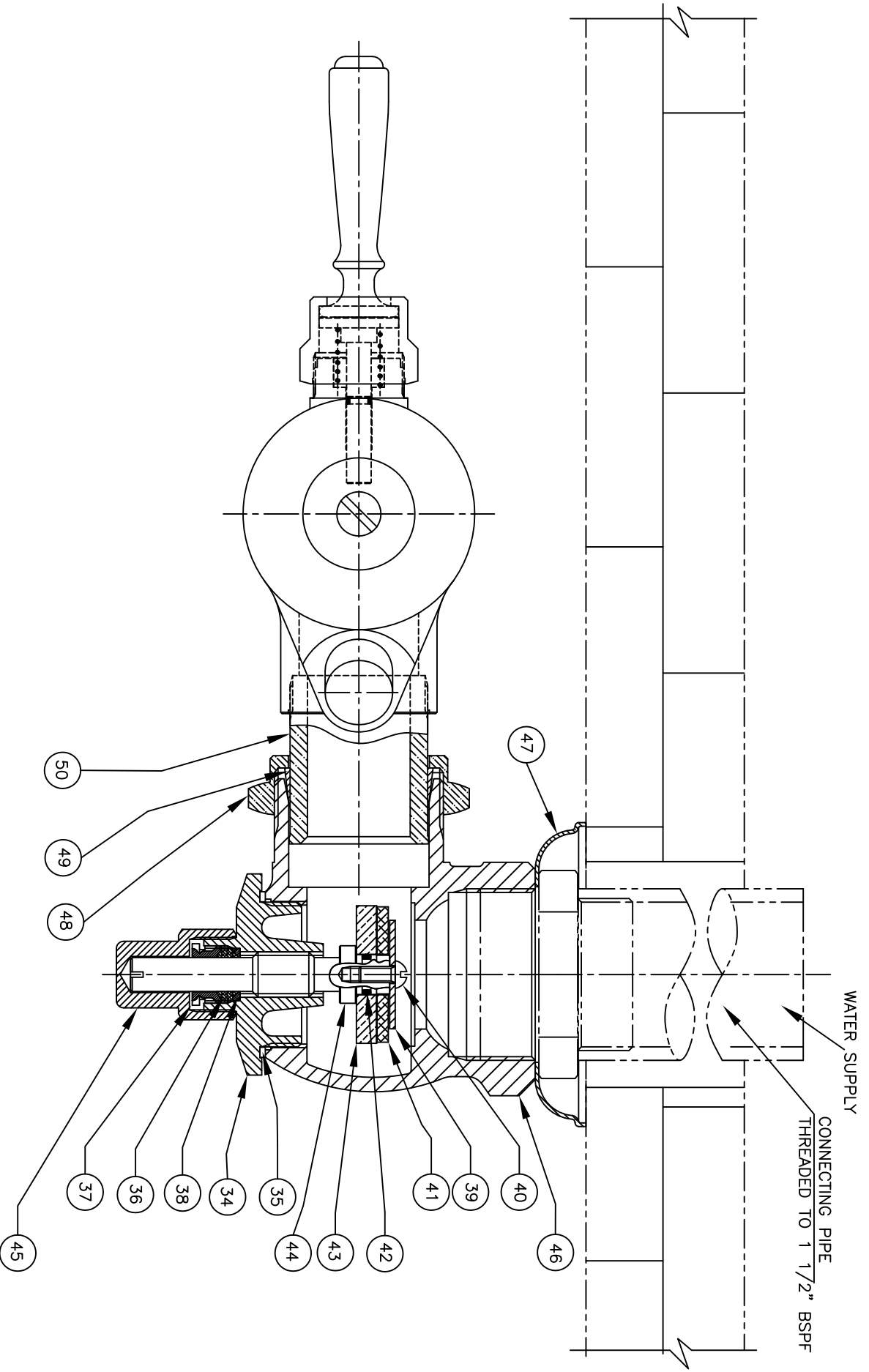
MAIN VALVE
COMPLETE

INNER VALVE
COMPLETE

AUXILIARY
VALVE
COMPLETE

Drawn by RNAPTHALI	Checked by	Origination Date	Issue Date 13/06/04	Scale 1:1
Title VALVE ASSEMBLY PARTS				
Title PUBCO PRODUCTS AND ENGINEERING			Drawing No 250 - B1 - 1	MATERIAL

Issue No	Revision note	Date	Issued by	Approved
1				
3A South Street, Rydalmere, NSW 21116 Ph. (02) 9684 2182, Fax. (02) 9638 2764				
Issue No	0	Issue No	1/1	Sheet



CROSS SECTION OF STOP COCK ASSEMBLY

Item No	Qty	Part No	Description
1	1	250-01-B1	FLUSH VALVE BODY
2	1	250-02B	C.P FLUSH VALVE CAP - MODEL B1
3	1	250-03	FLUSH VALVE CAP WASHER
4	1	250-04	C.P FLUSH CAP COVER DOME
5	1	250-05	C.P BUFFER CAP SCREW
6	1	250-07B	C.P FLUSH PIPE COUPLING NUT-MODEL B1
7	1	250-08	RUBBER WASHER FOR COUPLING NUT
8	1	250-09	COUPLING NUT WASHER
9	1	250-11	OPERATING HANDLE NUT
10	1	250-13	OPERATING STEM SPRING
11	1	250-14	OPERATING STEM - O RING TYPE
12	1	250-14A	O RING - BS008 - NITRILE RUBBER
13	1	250-10	OPERATING HANDLE
14	1	250-16A	AIR VALVE COMPLETE ASSEMBLY
15	1	250-17	FIBRE WASHER FOR AIR VALVE
16	1	250-18	MAIN VALVE BODY
17	1	250-19	MAIN VALVE STEM
18	1	250-21	MAIN VALVE BODY BRASS NUT
19	1	250-22	BUCKET WASHER
20	1	250-23	MAIN VALVE BODY RUBBER WASHER
21	1	250-24	AUXILIARY VALVE PLATE
22	1	250-25	AUXILIARY VALVE GUIDE
23	1	250-26	AUXILIARY VALVE STEM
24	1	250-27	AUXILIARY VALVE SLEEVE
25	1	250-28	AUXILIARY VALVE LOCK NUT
26	1	250-29A	AUXILIARY VALVE STAINLESS STEEL WASHER
27	1	250-30	AUXILIARY VALVE RUBBER WASHER

Item No	Qty	Part No	Description
28	1	250-31A	ADJUSTING VALVE BODY
29	1	250-32A	ADJUSTING VALVE GRAPHITE PACKING
30	1	250-32	ADJUSTING VALVE GLAND NUT
31	1	250-33	ADJUSTING VALVE SCREW
32	1	250-35	ADJUSTING VALVE WASHER
33	1	250-36	C.P ADJUSTING VALVE CAP
34	1	250-38B	STOP COCK CAP - B1
35	1	250-39	STOP COCK CAP WASHER
36	1	250-41A	STOP COCK GRAPHITE PACKING
37	1	250-41	STOP COCK PACKING GLAND
38	1	250-42	STOP COCK PACKING GLAND WASHER
39	1	250-43	STOP COCK STAINLESS STEEL WASHER
40	1	250-44	SS SCREW-3/16"x3/8" LG WHITWORTH
41	1	250-45	STOP COCK VALVE RUBBER WASHER
42	1	250-120	O RING - BS011 - NITRILE RUBBER
43	1	250-117	STOP COCK VALVE STEM PLATE
44	1	250-116B	STOP COCK STEM
45	1	250-46	C.P CAP FOR STOP COCK STEM
46	1	250-96	ADJUSTABLE CENTRE STOP COCK BODY
47	1	250-47	C.P ESCUTCHEON PLATE FOR STOP COCK
48	1	250-51B	C.P STOP COCK COUPLING NUT - B1
49	1	250-52A/52B	COMPRESSION RING
50	1	250-113	ADJUSTABLE CENTRE NIPPLE
51	1	250-153	DUAL FLUSH BUTTON - LARGE
52	1	250-14 DF	OPERATING STEM DUAL FLUSH

Drawn by R.NAPTHALI	Checked by	Origination_Date		Issue Date	Scale
Title LEVER FLUSH VALVE - B1			MATERIAL		

Issue No	Revision note	Date	Issued by	Approved

PUBCO PRODUCTS AND ENGINEERING	Drawing No	Issue No	Sheet
3A South Street, Rydalmere, NSW 21116 Ph. (02) 9684 2182, Fax. (02) 9638 2764	250 - B1 / DF	0	2/2